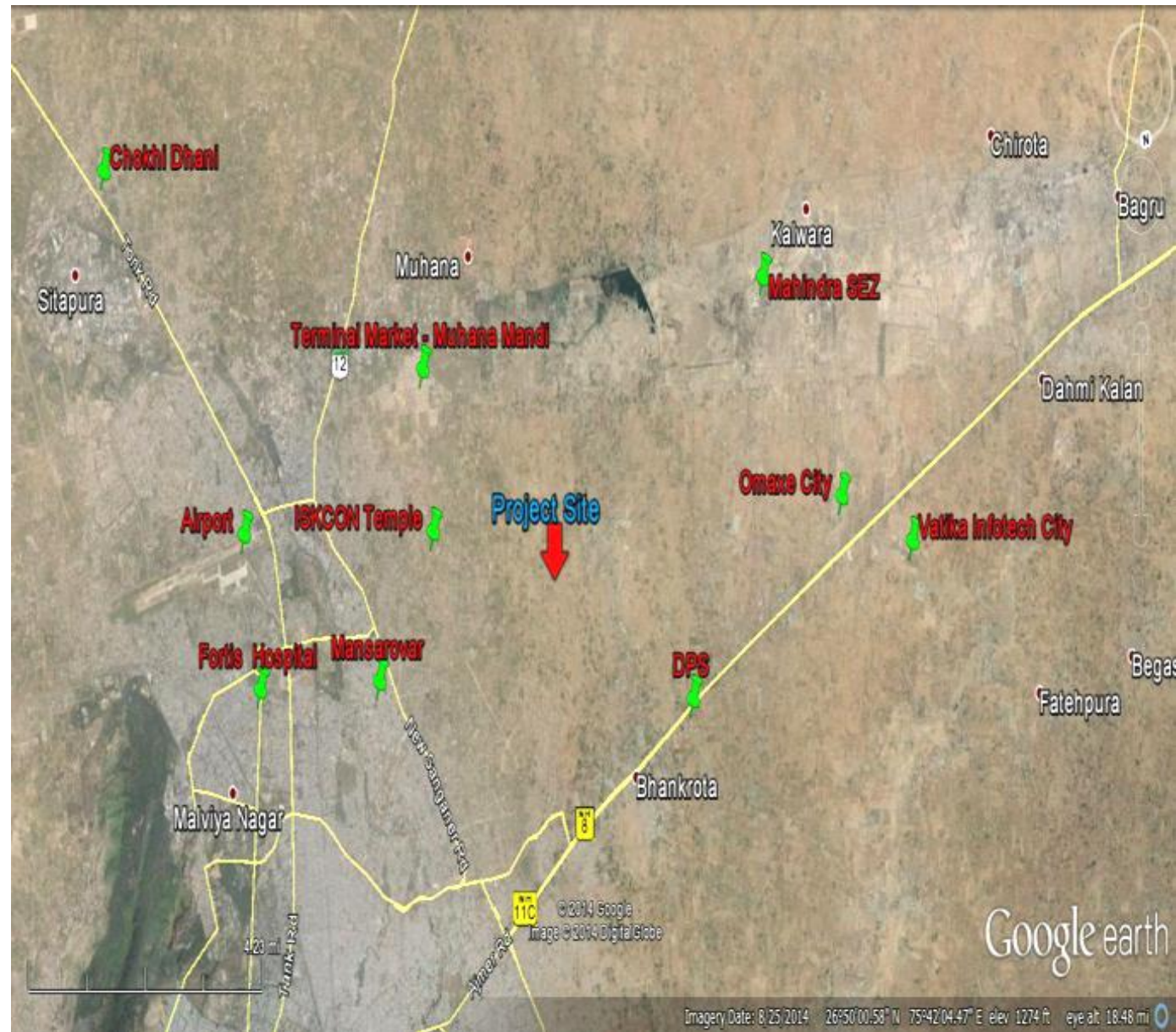




avana

a little more of life

Located in middle of Mansarovar & Ajmer Road, this Project is conveniently connected with Cities Major Landmarks.





AVANA

Front Elevation of the Building



AVANA

Back Elevation of the Building



AVANA

Ariel View of the Bulding



AVANA

Night View of the Building

Project Details

- Basement + Stilt + 8
- Club House on 4th & 5th Floor
- Total Number of Flats 82 (11 Flats on each floor)
- Land Size – 2898 Sq. Yards



AVANA

Stilt floor plan



AVANA
Typical Floor Plan

FLAT AREA DETAIL

Type	SBUA
2 BHK FLAT -01	1169.06 SQ FT
2 BHK FLAT -02	1200.61 SQ FT
2 BHK FLAT -03	1200.6 SQ FT
2 BHK FLAT -04	1208.39 SQ FT
2 BHK FLAT -05	1154.71 SQ FT
2 BHK FLAT -06	1212.1 SQ FT
2 BHK FLAT -07	1090.25 SQ FT
2 BHK FLAT -08	1145.5 SQ FT
2 BHK FLAT -10	1048.18 SQ FT
2 BHK FLAT -11	1124.55 SQ FT
1 BHK FLAT -09	676.19 SQ FT



PROJECT FEATURES

- Gated Residential Complex having Security and Safety from all four Sides.
- Rain Water Harvesting.
- Club House on 4th & 5th Floor having Fitness Centre.
- Kids Play Area
- Multi Purpose Community Centre.
- Basement and Stilt Floor Parking.
- Dedicated Parking area for Visitors.
- Mini Theater
- Cafeteria
- Library
- Temple



KEY FEATURES

- 10 mins drive from VT Road Junction.
- 20 mins drive from Jaipur International Airport.
- 10 mins drive from Saket & Dhanwantri Hospital.
- 20 mins drive from Fortis Hospital.
- 15 mins drive from schools like DPS, IIS & Neerja Modi.
- 10 mins drive from Iskon Temple, while a Shiv Mandir is just 200 mtrs.
- 10 Mins drive to NH-8 (Bhankrota Junction).
- 20 mins drive from Pink Pearl, Gaurav Tower, WTP & Entertainment Paradise.
- 15 mins drive from Mansarovar Metro Station.